

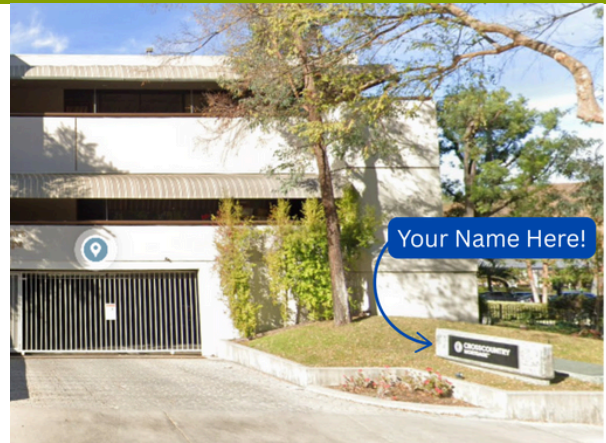


# PRIME OFFICE SPACE IN CALABASAS

2,443 SF FOR SUBLEASE

AVAILABLE  
FOR SUBLEASE

**\$2.50/SF**



## PROPERTY DETAILS

- **Configuration:** Contiguous office suites
- **Offices:** 8 private offices plus a bullpen area
- **Amenities:** Kitchen include
- **Parking:** 7 spaces included
- **Signage:** Monument Signage Available
- **Sublease Term:** Until December 30, 2026
- **Convenient Access:** Prime Calabasas location with easy access to nearby amenities
- **Ideal For:** Professional offices, startups, or expanding businesses

**GET IN TOUCH**

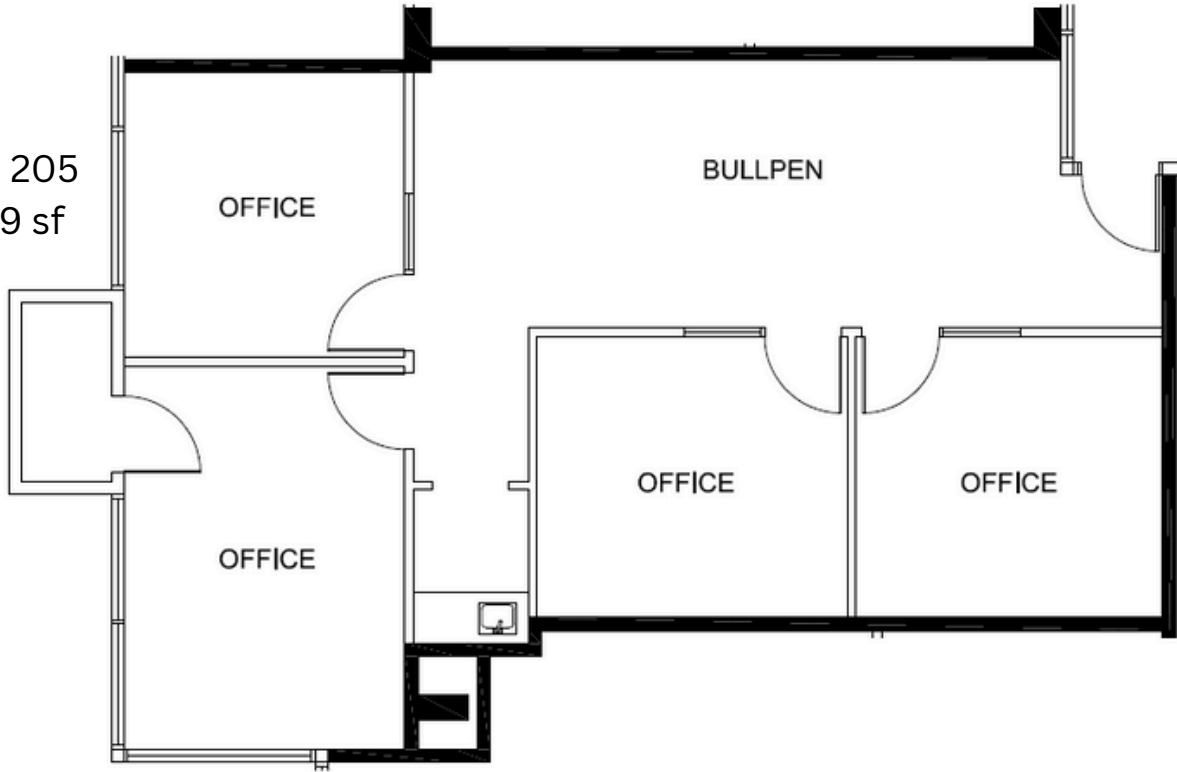
**FEDER & ASSOCIATES**  
COMMERCIAL REAL ESTATE  
SERVICE BEYOND EXPECTATION®

**RON FEDER**  
Senior Managing Director | DRE# 00983855  
(818) 222-0404  
RFEDER@RJFEDER.COM

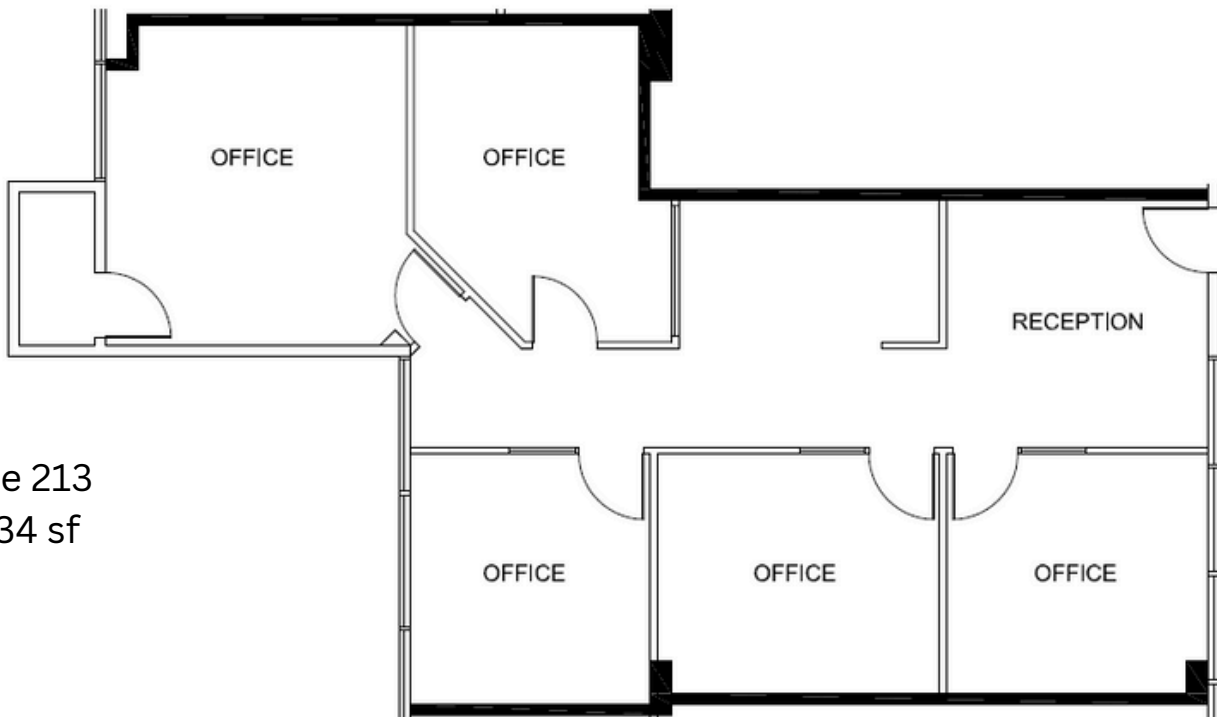
**BROOKE FEDER-KENRICK**  
Commercial Associate | DRE# 02199320  
(818) 451-3636  
BKENRICK@RJFEDER.COM

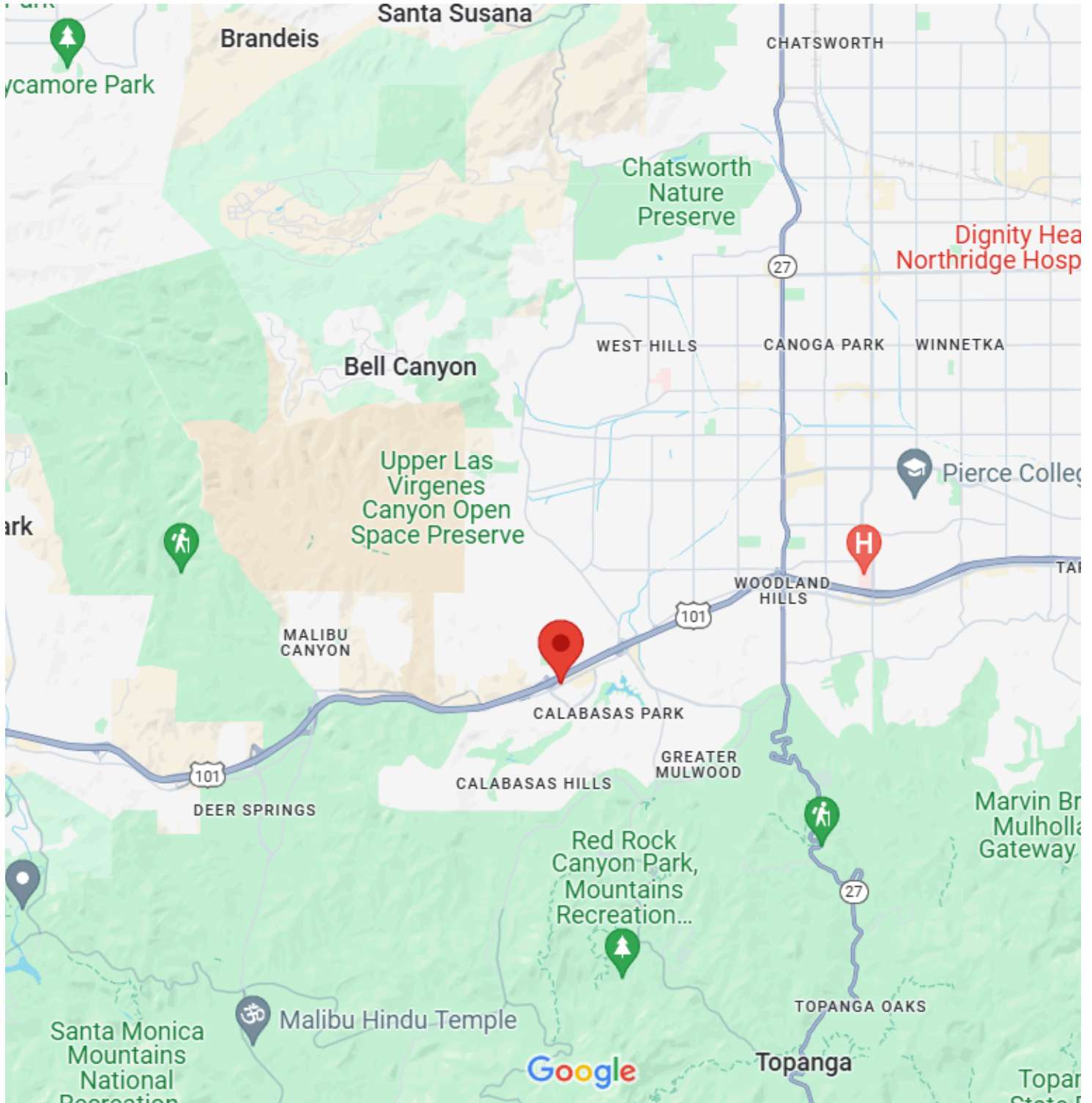


Suite 205  
1,109 sf



Suite 213  
1,334 sf





 **FEDER & ASSOCIATES**  
COMMERCIAL REAL ESTATE  
SERVICE BEYOND EXPECTATION®