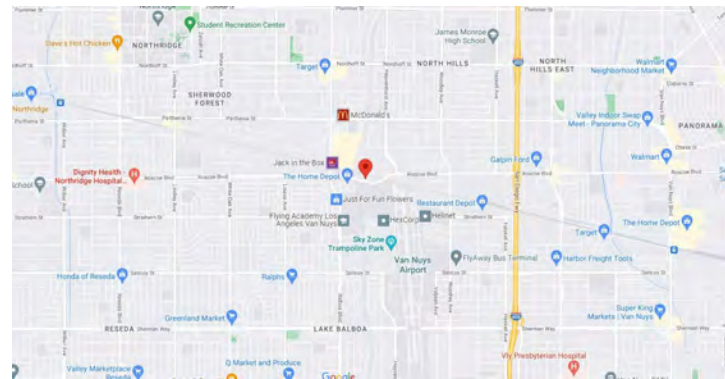


Sky Park Plaza 16713 Roscoe Blvd. Van Nuys, CA

±4,708 SF Office Space For Lease



- Ideal 2nd Floor Office Space
- Lots of Windows!
- Central Valley Location!
- 2-Stairwell Entrances!
- Private Offices, Bullpen & Conference Room
- 3/1,000 Parking
- Lease Through 12/31/2026 w/ Possible Extension



Lease Rate: \$1.65 SF/NNN

\$0.24 Net Charges

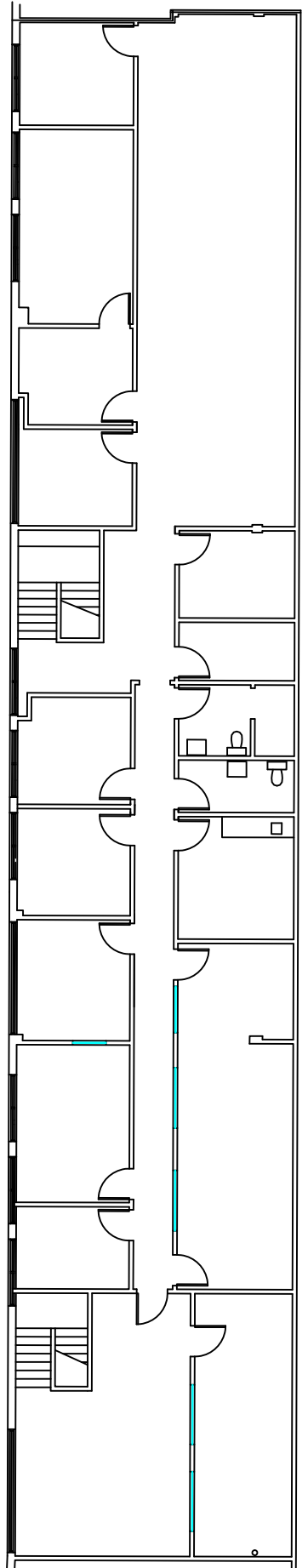
RON FEDER
Senior Managing Director
818.222.0404
rfeder@rjfeder.com
DRE#00983855



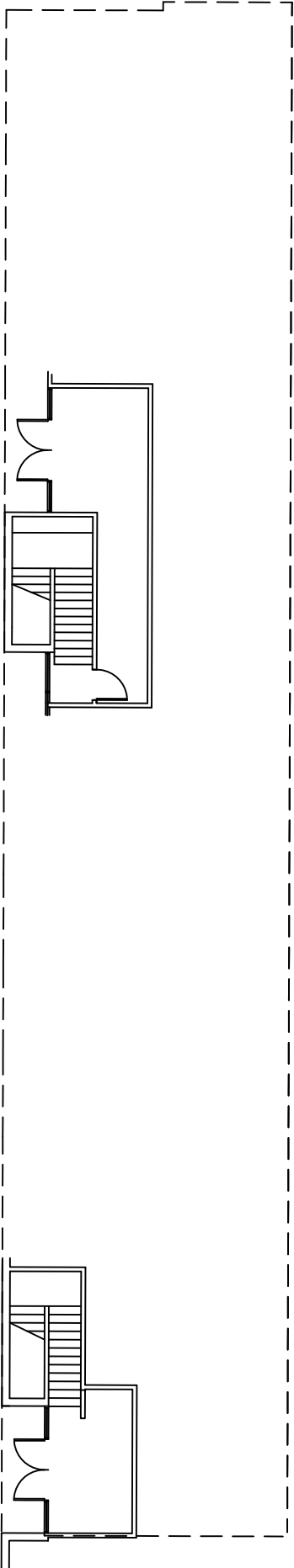
SERVICE BEYOND EXPECTATION®

SKY PARK PLAZA

FLOOR PLAN



SECOND LEVEL

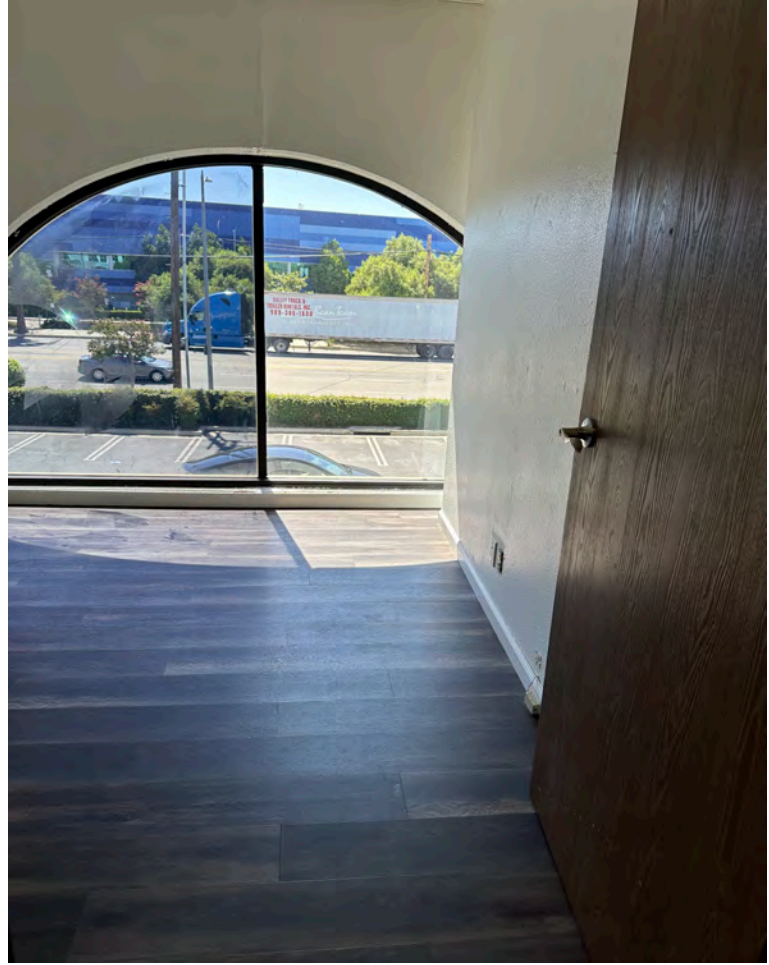


GROUND LEVEL



SIDLEY AUSTIN LLP
INCORPORATED
10125 WASHINGTON BOULEVARD
CULVER CITY, CALIFORNIA 90232

SKY PARK PLAZA PHOTOS



SKY PARK PLAZA PHOTOS

