

INDUSTRIAL FOR LEASE

Tech Park @ Townsgate

2641 TOWNSGATE RD. Unit 500
WESTLAKE VILLAGE, CA 91361



RON FEDER
MANAGING DIRECTOR

o. 818.222.0404

f. 818.322.4015

rfeder@rjfeder.com

www.rjfeder.com

Cal Lic #00983855



PEAK
COMMERCIAL



FEDER & ASSOCIATES
COMMERCIAL REAL ESTATE

Lic. 01872625 Keller Williams Realty Calabasas does not guarantee the accuracy of square footage, lot size or other information concerning the condition or features of the property provided by the seller or obtained from public records or other sources and the buyer is advised to independently verify the accuracy of that information through personal inspection with appropriate licensed professionals. Each office is independently owned and operated.

UNDER NEW OWNERSHIP

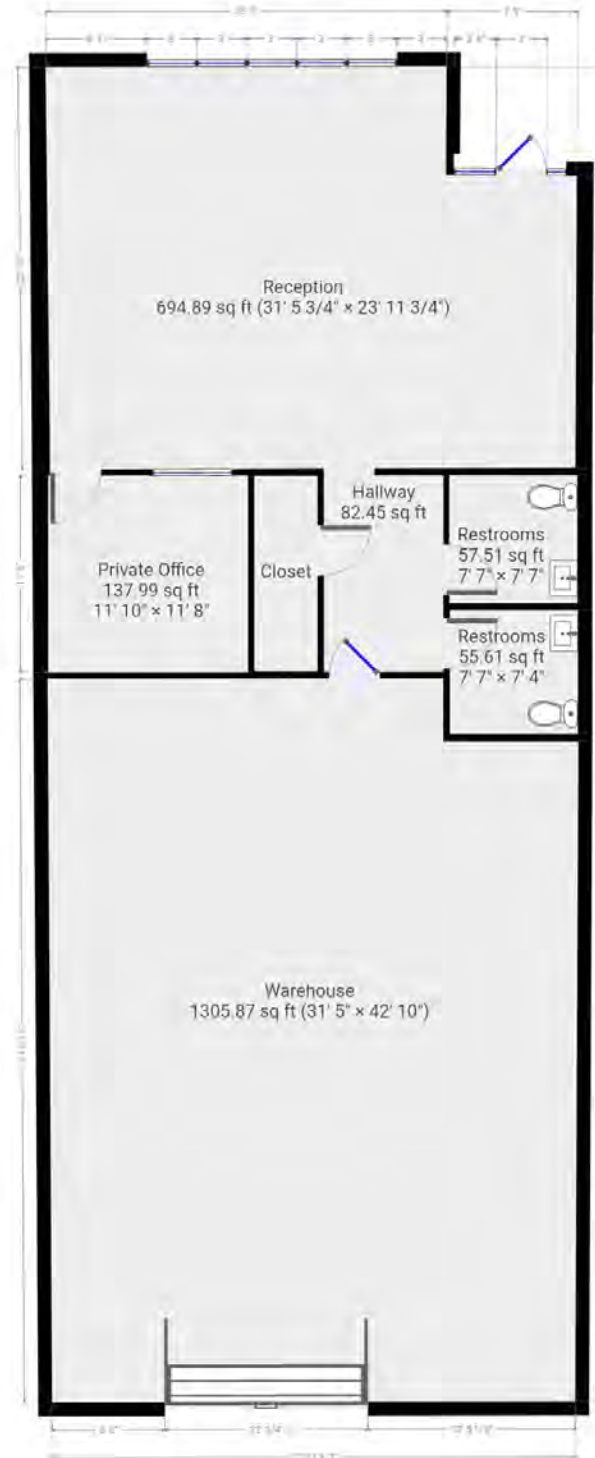
Creative, New Sustainable Work Environments Upscale
Workspace with Townsgate Road Frontage.

PROPERTY SPECIFICATIONS

Address:	2641 Townsgate Road Unit 500 Westlake Village
Total Square Feet:	2,605 SF
Parking:	5 Spaces
Lease Rate:	\$1 .89/SF
Offices:	HVAC
CAM FEES:	None
Available:	Sept. 1, 2022

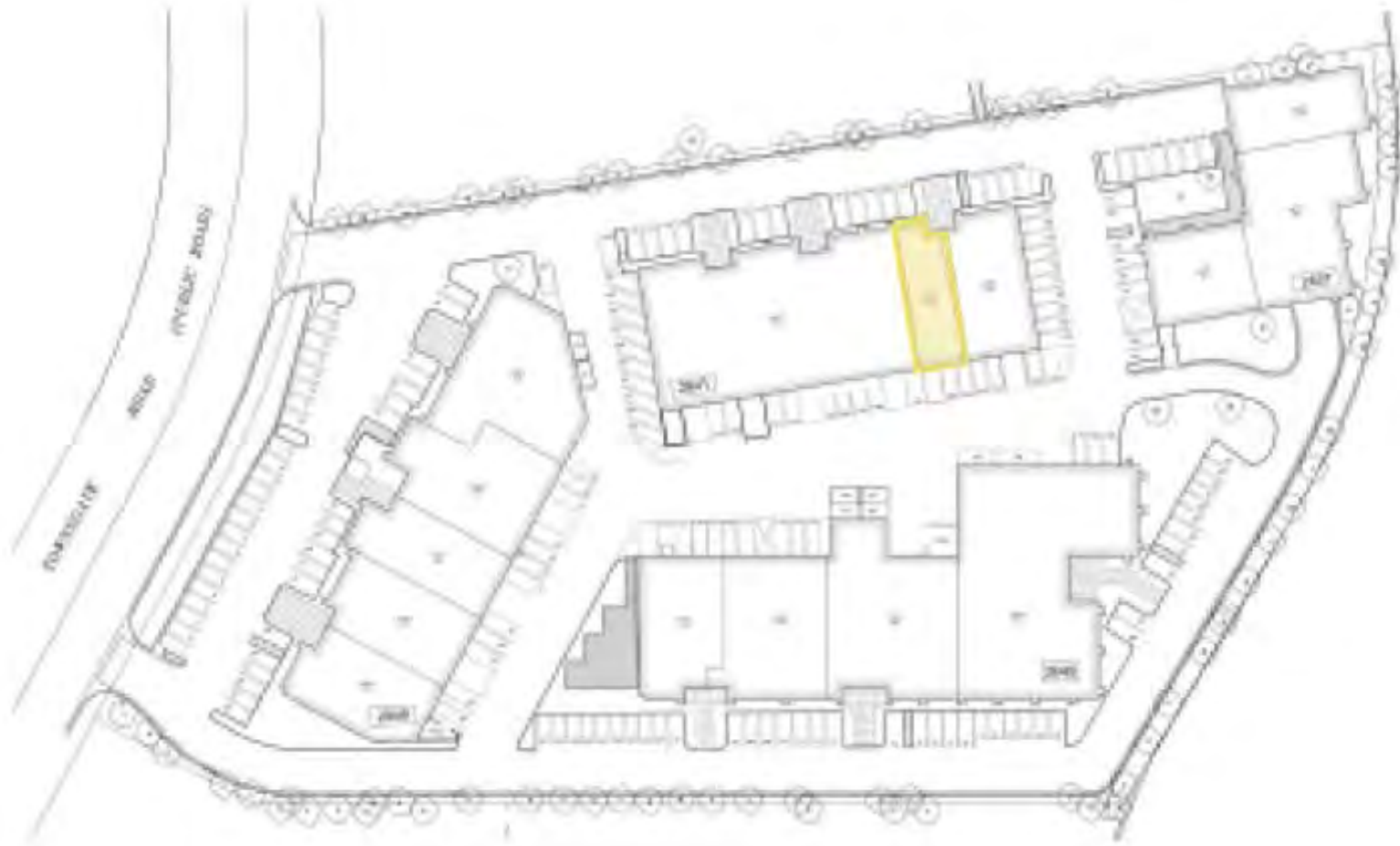


2641 TOWNSGATEROAD UNIT 500 FLOORPLAN



APPROX 2,605 SQ FT.

TECH PARK @ TOWNSGATE SITE PLAN



RON FEDER
MANAGING DIRECTOR

o: 818.222.0404

f: 818.322.401

rfeder@rjfeder.com

www.rjfeder.com

Cal Lic #00983855

PEAK
COMMERCIAL

Id: 01872625 Keller Williams Realty, Inc. does not guarantee the accuracy of square footage, lot area, or other information concerning the condition or features of the property provided by the seller or obtained from public records or other sources. The buyer is urged to independently verify the accuracy of that information through professional inspection of appropriate licensed professionals. Each office is independently owned and operated.