

# MARIN PROFESSIONAL CENTER

501-509 MARIN ST

*a home away from home...*

MARIN  
CORPORATE  
CENTER  
501  509

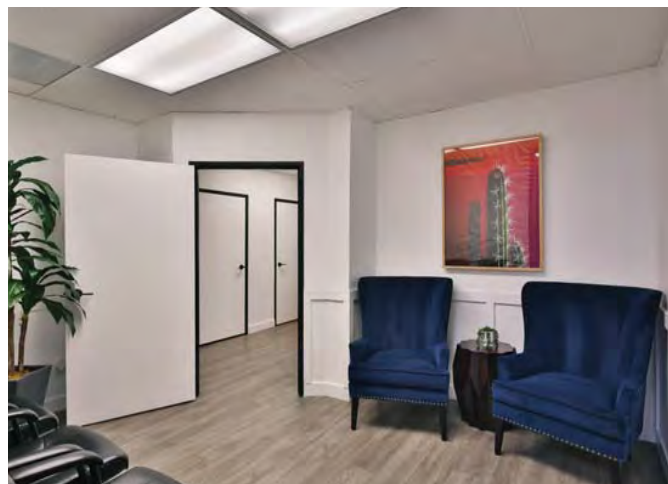
PEAK  
COMMERCIAL

# Building Highlights

## *Office/Medical Space For Lease*

- ◆ Beautifully landscaped business center in the heart of Thousand Oaks with expansive views of the valley
- ◆ Abundant parking and easy access to i-101 freeway
- ◆ Ownership open to turn-key or tenant improvement allowance deals
- ◆ Medical space also available







# Location Highlights

## *Thousand Oaks*

- ◆ Beautifully landscaped medical/office center in the heart of Thousand Oaks with expansive views of the valley
- ◆ 2.6 Miles (8 min) from Los Robles hospital in Thousand Oaks
- ◆ Easy access to i-101 and 23 Freeways
- ◆ Unrivaled amenity access within 3 miles, including Janss Marketplace, Thousand Oaks Mall, and many more
- ◆ Excellent workforce and neighborhood demographics



# AERIAL OVERVIEW



501-509 MARIN ST



# Marin Corporate Center Co-Working Executive Offices



## Executive Suites

Located between The Oaks Mall and Janss Marketplace in Thousand Oaks

509 Marin Street, Suite 123, Thousand Oaks, CA 91360

For leasing Info call

Eric Kates, Peak Commercial – CalBRE# 00884515

(818) 414-2584

[www.marinprofessionalcenter.com](http://www.marinprofessionalcenter.com)

# Flexible Leasing Options



Private Office

Month-to-month rental or lock it up for a year. Shared spaces available with Membership on a first-come, first-serve basis.



Shared Office Space in a Casual yet Functional Setting

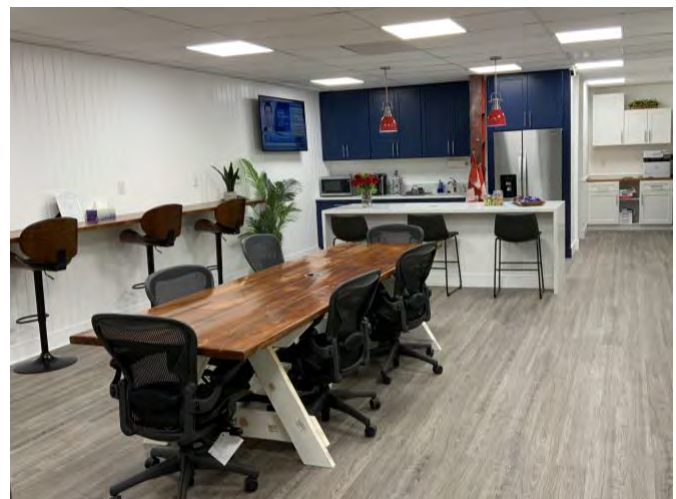
Enjoy communal office environment, share ideas and collaborate with like minded entrepreneurs in a casual social environment.

**Conference Facility** – fully equipped with two Smart TVs, table for 8, Credenza/Serving Station and Lounge. Easily pair your Bluetooth devices to the Smart TVs for presentations that Wow!

**24/7** access with monthly or annual memberships.



Kitchen and Island work areas



Power Up in the Foye or Private Office

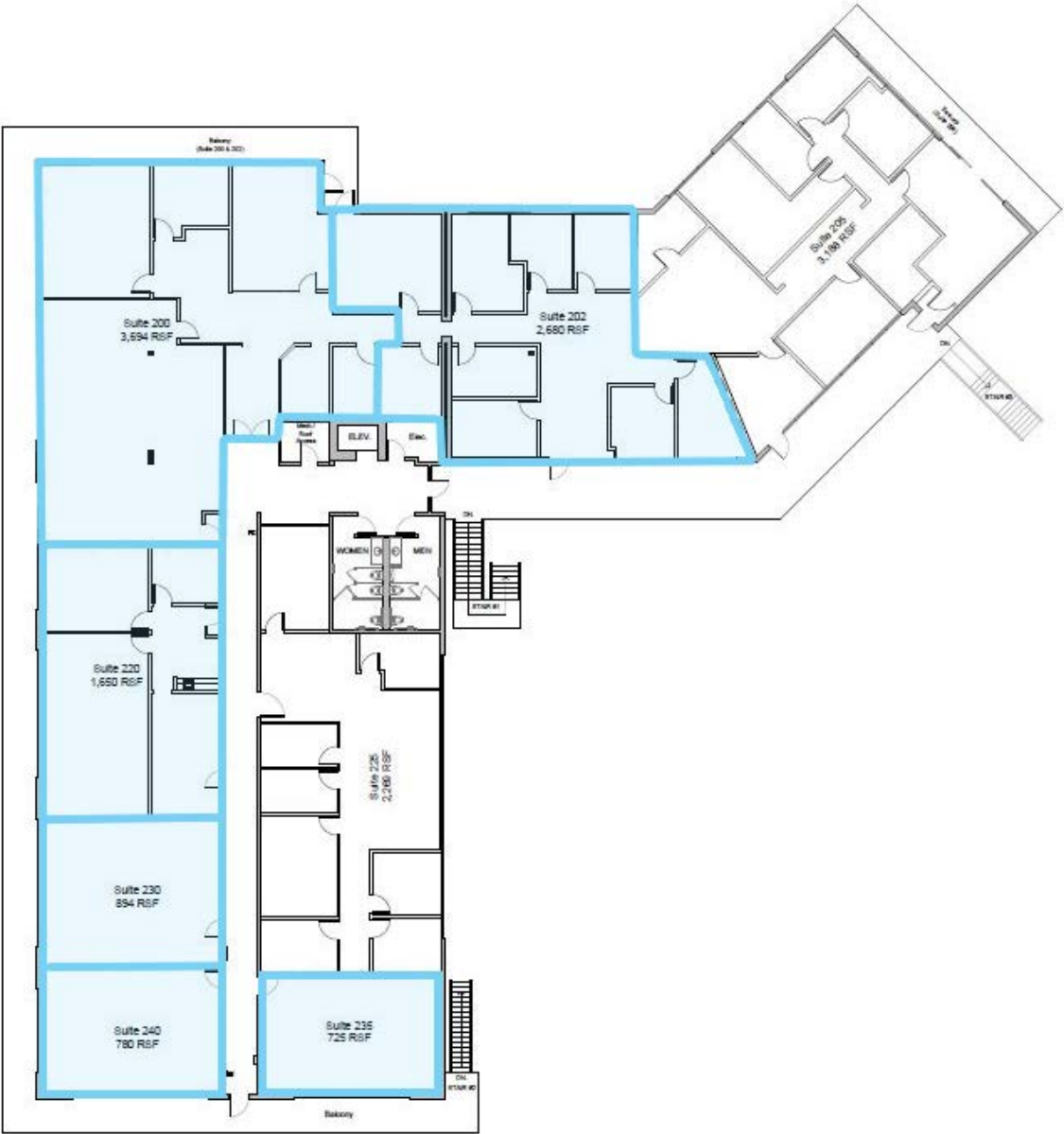


# 501 Marin St

## Second Floor

Suite	Size	Availability
200	3,694 SF	Immediate
202	2,680 SF	TBD
220	1,650 SF	Immediate
235	725 SF	Immediate
230	894 SF	Immediate
240	780 SF	Immediate

Prices Available Upon Request



# 509 Marin St

## Second Floor

Suite	Size	Availability
230	463 SF	Immediate

Prices Available Upon Request



**ERIC KATES**

Commercial Director

m: (818) 836-6704

ekates@peakcommercial.com

DRE: #00884515

**PEAK**  
COMMERCIAL

www.peakcommercial.com

*This information has been furnished from sources which we deem reliable, but for which we assume no liability. The information contained herein is given, in confidence, with the understanding that all negotiations pertaining to this property be handled through the submitting office. All measurements are approximate.*