

8101-15

ORION AVENUE
VAN NUYS, CALIFORNIA



For Lease

1,150 SF

FOR INFORMATION, CONTACT:



Ron Feder
Senior Managing Director
818-222-0404 direct
818-332-4015, efax
rfeder@rjfeder.com
www.rjfeder.com
DRE# 00983855



ERIC KATES
Peak Commercial
D: 818-836-6704
F: 818-332-4262
ekates@peakcommercial.com
www.rjfeder.com
CA DRE# 00884515

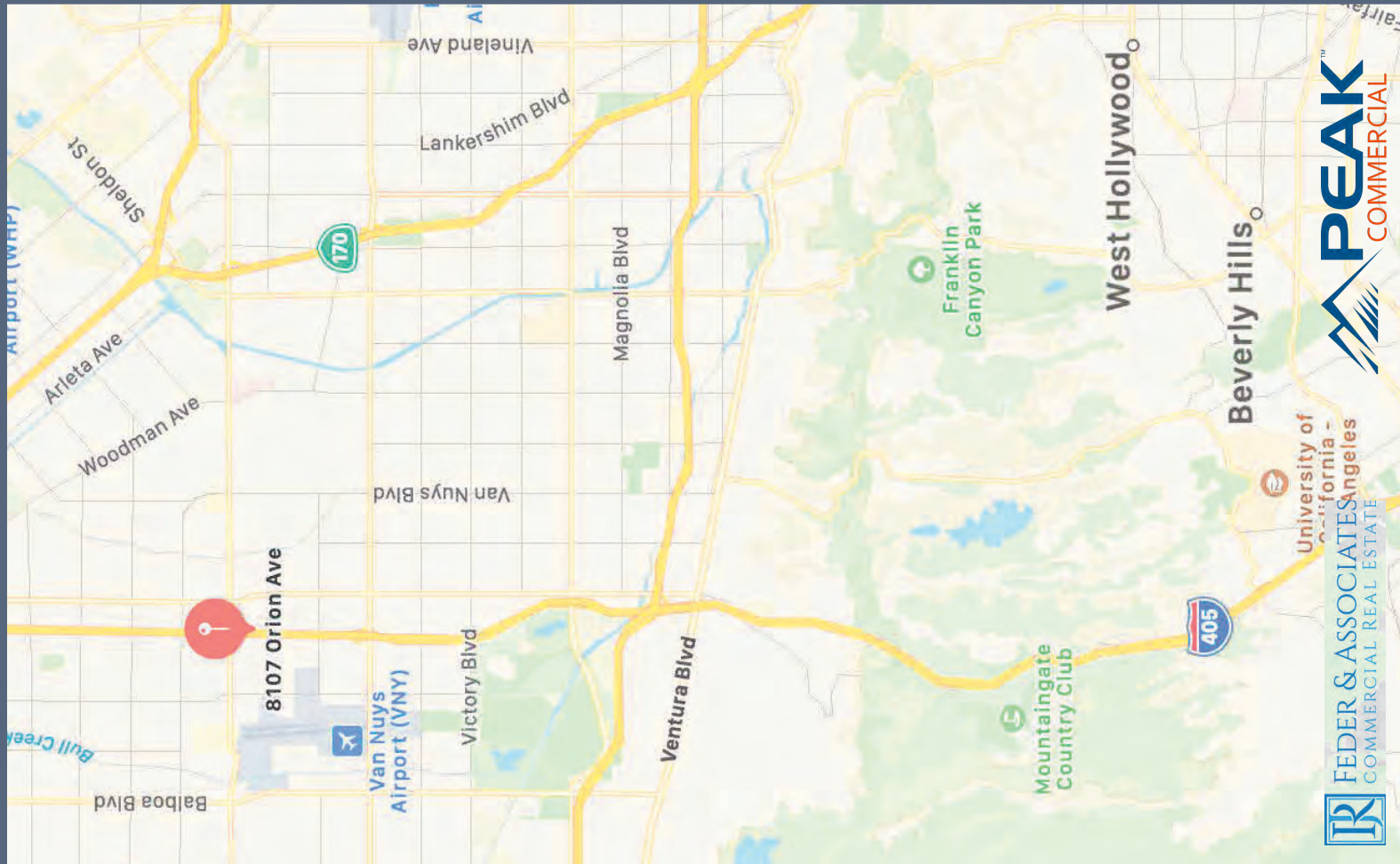
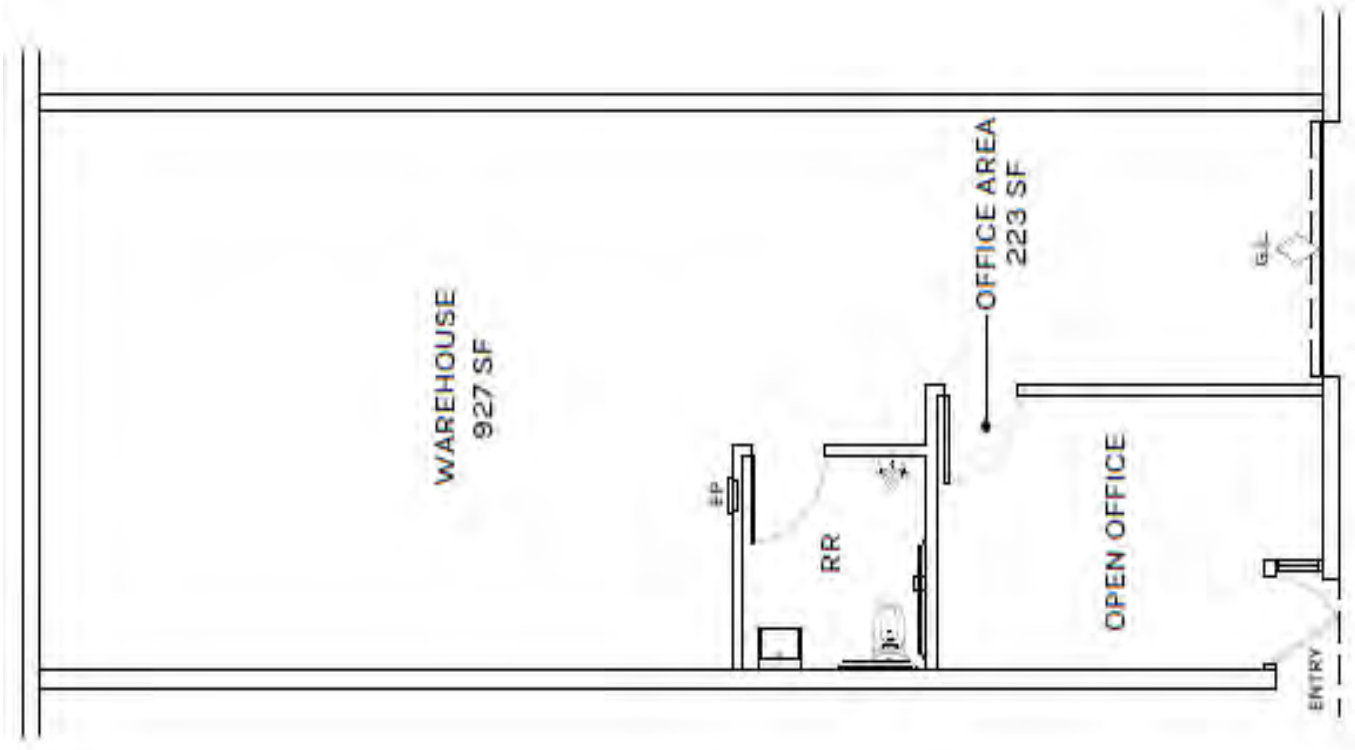
\$1.85/PSF/mo MG
CAM fee \$0.12/PSF/mo

- Low CAM Fees!
- Power: 200 amps, 120/240 volt, 3 phase
- Warehouse minimum 13' ceiling
- HVAC for office which extends into Warehouse
- Two (2) Unreserved Parking Spots
- Close to the Ventura (405) Freeway!



Rexford Industrial

8101-15 ORION AVENUE, VAN NUYS | Los Angeles County
For Lease 1,150 SF





 **PEAK**TM
COMMERCIAL



 **FEDER & ASSOCIATES**
COMMERCIAL REAL ESTATE



 **PEAK**[™]
COMMERCIAL



 **FEDER & ASSOCIATES**
COMMERCIAL REAL ESTATE