

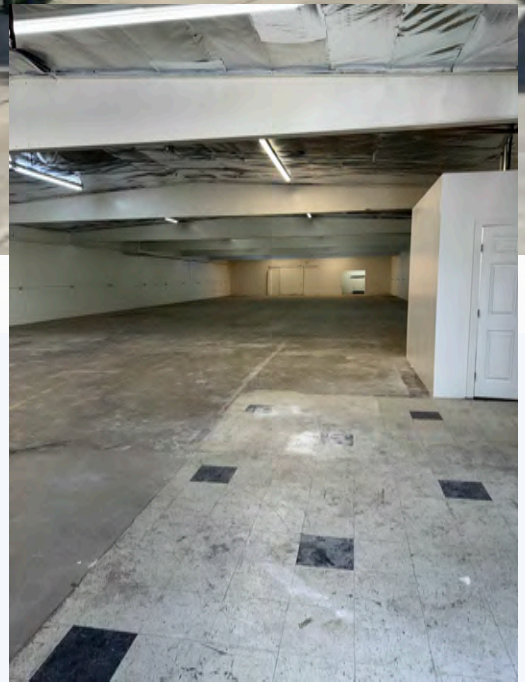
For Lease

7,650 SF of Industrial Warehouse Space
15749 Strathern St, Van Nuys, CA 91406



Space Features:

- Prime Van-Nuys Location!
- Open Floor Plan!
- 8 Parking Spaces!
- Close Proximity to 405 and 101 Freeways!
- Located Near Van Nuys Airport!
- 1 Restroom



Monthly Rental Rent: \$1.79 SF/MG

Ron Feder
Senior Managing Director
DRE# 00983855
(818) 222-0404
RFEDER@RJFEDER.COM

Brooke Feder-Kenrick
Commercial Associate
DRE# 02199320
(818) 451-3636
BKENRICK@RJFEDER.COM

Joseph Dahan
Commercial Associate
DRE# 02121212
(424) 457-4049
JDAHAN@RJFEDER.COM

